

**Jefferson County Land & Water Conservation Committee Agenda
"Working Together to Protect & Enhance the Environment"**

**Jefferson County Courthouse
311 S Center Ave, Rm 112
Jefferson, WI 53549-1701**

Wednesday, October 17, 2018 @ 8:00 am

Committee Members: Matthew Foelker (Chair), Walt Christensen (Vice-Chair), Ed Morse (Secretary), Dan Herbst (UWEX Member), Mike Kelly (UWEX Member), Frank Anfang (FSA Rep), and Margaret Burlingham (Public Member)

1. Call to Order
2. Roll Call (Establish a Quorum)
3. Certification of Compliance with the Open Meetings Law
4. Review of the October Agenda
5. Approval of the September 19, 2018 Meeting Minutes
6. Public Comment (members of the public who wish to address the Committee on specific agenda items must register their request at this time)
7. Communications
 - Department of Agriculture, Trade & Consumer Protection (DATCP) October 2018 Report
8. Discussion and Possible Action on USDA, APHIS, Animal Damage - Dave Terrall
9. Discussion on Natural Resources Conservation Service (NRCS) Report
10. Discussion on Water Resources in Jefferson County - Patricia Cicero
11. Discussion and Possible Action on Climate Change Resolution - Walt Christensen
12. Discussion on LWCD October 2018 Director's Report
13. Discussion on Potter's Field
14. Discussion on Solar Farms
15. Discussion on LWCD Annual Tree Sale
16. Discussion and Possible Action on Notices of Noncompliance - Farmland Preservation Program (FPP)
17. Discussion and Possible Action on Cancellation of Notices of Noncompliance - FPP
18. Review of the Monthly Financial Report (August)
19. Discussion and Possible Action on Purchase of Agriculture Conservation Easements (PACE) Applications
20. Discussion on Jefferson County Land & Water Conservation Report on Baseline Documentation for Easements
21. Discussion on Items for the Next Agenda
22. Next Scheduled Meeting:
 - November 21, 2018 @ 8:00 am in Room 112
23. Adjournment

A quorum of any Jefferson County Committee, Board, Commission or other body, including the Jefferson County Board of Supervisors, may be present at this meeting.

Individuals requiring special accommodations for attendance at this meeting should contact the County Administrator 24 hours prior to the meeting at (920) 674-7101 so appropriate arrangements can be made.

Land & Water Conservation Committee Minutes

September 19, 2018

- 1. Call to Order:** The monthly meeting was called to order by Matt Foelker at 8:00 am. Committee members Matthew Foelker (Chairperson), Walt Christensen (Vice-Chairperson), Ed Morse (Secretary), Mike Kelly (UWEX Member), Frank Anfang (FSA Rep), and Margaret Burlingham (Public Member) were present. Also in attendance were Mark Watkins, Director, Land & Water Conservation Department (LWCD); Kim Liakopoulos, LWCD; Nancy Lannert, LWCD; Joe Strupp, LWCD; and J. Blair Ward, County Corporation Counsel. Committee member Dan Herbst (UWEX Member) was excused.

 - Members of the Public in Attendance: Anita J Martin, Dyan Pasono, Mary Frankiewicz
- 2. Roll Call (Establish a Quorum):** A quorum was established.
- 3. Certification of Compliance with the Open Meetings Law:** It was determined that the committee was in compliance with the Open Meetings Law.
- 4. Review of the September Agenda:** The September agenda was reviewed by the committee members. No changes were proposed.
- 5. Approval of the August 15, 2018 Meeting Minutes:** Kelly made a motion to approve the August 15, 2018 meeting minutes as written, Christensen seconded. Motion passed 6/0.
- 6. Public Comment:** Members of the public requested to be allowed to ask questions during Agenda Item #10. Request granted by Chairperson Foelker.
- 7. Communications:**

 - Department of Agriculture, Trade & Consumer Protection (DATCP) September 2018 Report.
- 8. Natural Resources Conservation Service (NRCS) Report:** Watkins received information the regarding EQIP 2019 Storm Relief Sign-up. "Jefferson is an eligible county. This sign-up is specifically for agricultural producers who have had damage (ie soil erosion, gulleys, significant forest damage, etc) due to recent weather. They need to be eligible for regular NRCS programs and apply by November 16th." Producers will need to go to NRCS for further information.
- 9. Discussion on LWCD September 2018 Director's Report:** Watkins discussed the September 2018 Director's Report.
- 10. Discussion on Agricultural Performance Standards Outlined in Chapter NR 151 - Joe Strupp:** Strupp gave a presentation on NR 151 Agricultural Performance Standards. A discussion followed.
- 11. Discussion and Possible Action on Southern Area Association (SAA) Representatives:** Watkins will be the LWCD representative, Christensen volunteered to be the LWCC representative, Foelker volunteered to be the alternate.

- 12. Discussion and Possible Action on Changing the Minute Taking Procedures:** Corporation Council Ward gave guidance on minute taking procedures. At this time no changes were proposed by the committee members.
- 13. Discussion and Possible Action on Placement of an Aboveground Vault at the Potter's Field Cemetery:** A request from the Medical Examiner has been brought to the committee to place an aboveground vault to store human remains of the indigent and unclaimed. Christensen made a motion to approve the general concept of placing an aboveground vault on the Potter's Field, Kelly seconded. Motion passed 6/0.
- 14. Discussion and Possible Action on Notices of Noncompliance - Farmland Preservation Program (FPP):** There were no notices at this time.
- 15. Discussion and Possible Action on Cancellation of Notices of Noncompliance - FPP:** There were no cancellations at this time.
- 16. Review of the Monthly Financial Report (July):** The most recent statement of revenues and expenditures (July) was distributed.
- 17. Discussion on Rock County Farmland Preservation Resolution:**
The committee revisited the resolution. Burlingham made a motion to support Rock County's resolution as presented, Christensen seconded. Motion passed 6/0.
- 18. Discussion on the Private Sale of an Easement Property:** Watkins made the committee aware of a possible sale of an easement property. Nothing has been made official at this point. A letter outlining the easement language has been sent to the current property owner for guidance.
- 19. Discussion and Possible Action on Purchase of Agriculture Conservation Easements (PACE) Applications:** There are no applications at this time.
- 20. Discussion on Jefferson County Land & Water Conservation Report on Baseline Documentation for Easements:** A full baseline documentation report will be presented at the October LWCC meeting.
- 21. Discussion on Items for the Next Agenda:** Possible agenda items include: Potter's Field update, solar farm update, draft resolution from Citizen Climate Lobby.
- 22. Next Scheduled Meeting:**
- October 17, 2018 @ 8:00 in Room 112
- 23. Adjournment:** Anfang made a motion to adjourn at 9:25 am, Christensen seconded. Motion passed 6/0.

Kim Liakopoulos
Administrative Assistant I ~ LWCD

**Water Resources:
Technical and Professional Resources Available through
Jefferson County Land and Water Conservation Department**

Water Resource Planning and Protection Projects

- ◆ Project planning and implementation assistance
- ◆ Assistance with grant applications: identifying scope, writing. Jefferson County may be able to act as the fiscal agent. County staff time can be used as local match for grant funds.
- ◆ Data collection - water quality, aquatic plant surveys on lakes, shoreland surveys
- ◆ Report writing
- ◆ Public meeting planning and implementation assistance
- ◆ Tips on working with consultants
- ◆ Information on required permits

Water Resources Technical Assistance

- ◆ Assistance provided on a number of water resource issues/questions including: lake and river systems, runoff concerns, well water testing, water sampling, invasive species, aquatic plants, fish and other aquatic life, water laws, shoreland laws, etc.

Conservation Practices

- ◆ Identification of sites/areas in need of conservation practices
- ◆ Financial assistance: State Cost-Share Program can reimburse practice implementation, contracts required (based on availability of funding)
- ◆ Technical assistance for designing practices

Training

- ◆ Lake monitoring: water clarity, temperature, dissolved oxygen, phosphorus, chlorophyll
- ◆ Stream monitoring: water clarity, temperature, dissolved oxygen, flow, biotic index
- ◆ Aquatic Invasive Species monitoring
- ◆ Clean Boats/Clean Waters - teach volunteers/employees to educate boaters about aquatic invasive species

Education

- ◆ Printed educational materials are available on a variety of topics
- ◆ Press releases can be produced on a wide range of topics
- ◆ County staff is available for presentations at meetings, schools, educational events

Networking

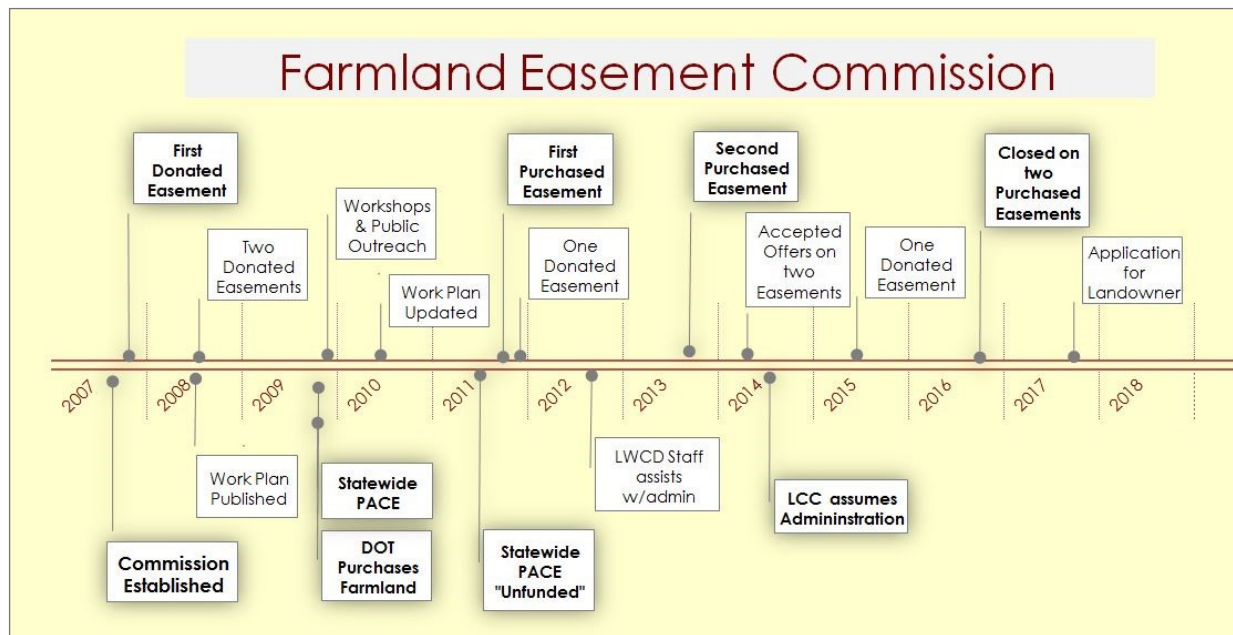
- ◆ Share experiences, project ideas from other water/conservation groups
- ◆ Connect water/conservation groups with experts

Maps

- ◆ Map development - a variety of "layers" are available including water, soil, wetlands, environmental corridors, watersheds, land use, etc.

Patricia Cicero, Water Resource Specialist, Jefferson County Land and Water Conservation Department, 920-674-7121, patriciac@jeffersoncountymi.gov

Agenda items #19 & 20 - Agricultural Easements Donated & Purchased



Funding description

- ◆ **The Easement Purchase Program (PACE) funding:** by an initial lump sum of \$250,000 from sale of County owned farmland in 2009 in additions to fees for re-zoning of land from A-1 to A-3 and land transfers. Rezoning & land transfer fees discontinued when PACE program is "unfunded" in State budget.
- ◆ **The Donated Easements:** no specific County funds allocated, land owner is responsible for all appraisal, title insurance and closing costs with assisted of County staff.
- ◆ **Purchased Easement cost estimates:** on average \$65,000 per purchase with \$140,000 NRCS matching grant. This includes appraisal, title insurance and closing costs.

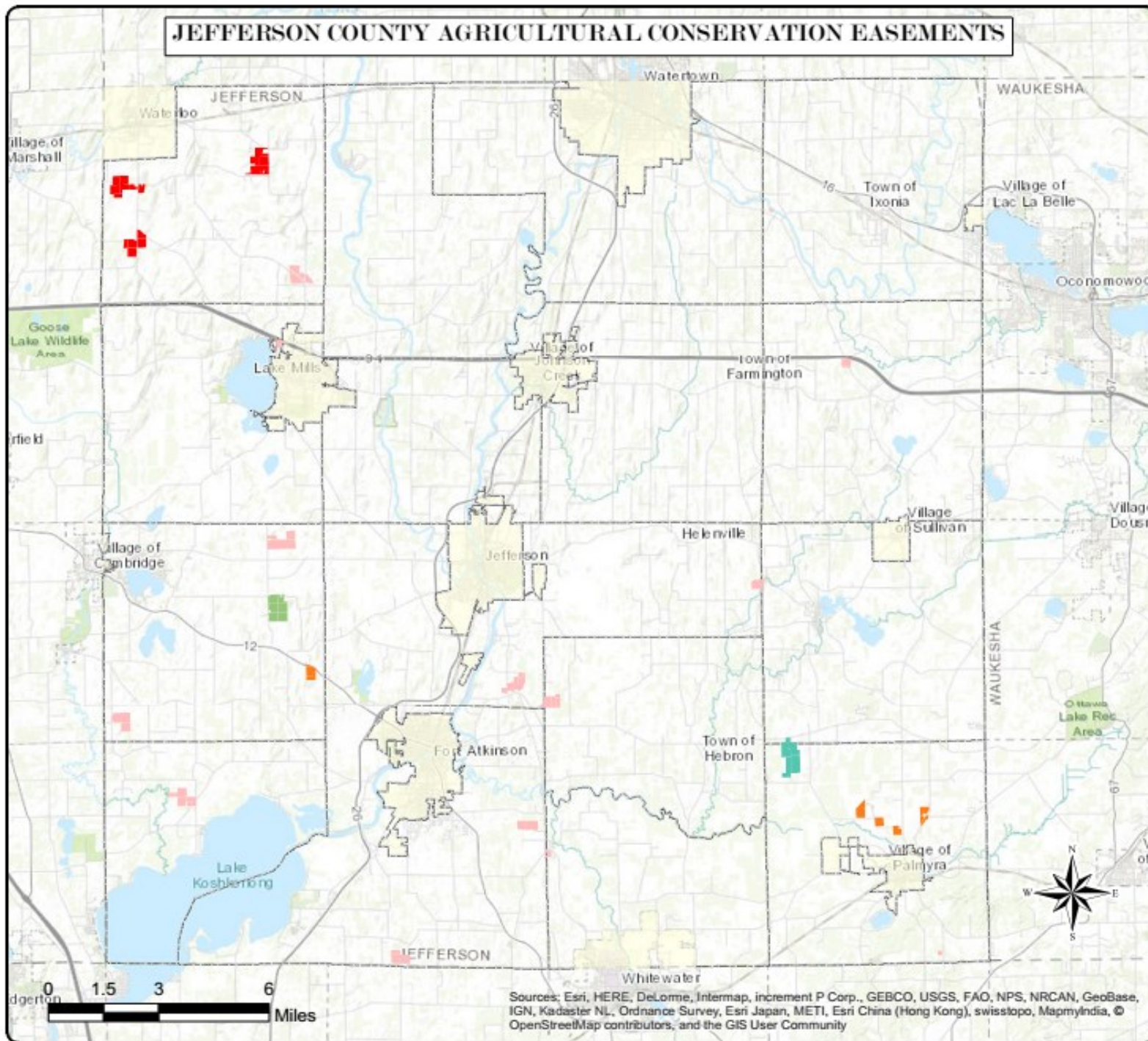
General Requirements & Information

- ◆ **Purchased Easement Minimal Requirements:** land must be Zoned Exclusive Ag (A-1), with over 50% being currently farmed and the majority having a prime soil classification. Have at least one property split available per the County's current Land Use & Farmland Preservation Plan. Land is eligible and rewarded matching grant funds from NRCS for development rights purchase.
- ◆ **Donated Easement Minimal Requirements:** No NRCS involvement or documentation needed to finalize. All other requirements of agricultural easements apply—i.e. Zoning, land use and prime soil designation.
- ◆ **Baseline Property Reports:** assess the current property conditions to guide the evaluation in the effectiveness of an easement's terms for protecting the easement's purpose over time. The baseline is recorded with the easement deed, allows for consistent monitoring and IRS compliance.
- ◆ **Monitoring and associated documentation:** all easements where Jefferson County is named holder or cooperating entity will require a Baseline Property Report. A component of the report is the requirement for annual monitoring and reporting to easement co-holders—i.e. NRCS, DATCP. When Jefferson County is a named co-holder, the County is primarily responsible for any enforcement of easement violations and conservation compliance.

Current Easement Status

- ◆ **Easement types & acres:** County Purchased & co-holder: 19 parcels @ 555 acres County as cooperating entity: 6 parcels @ 228 acres County as holder of donated: 9 parcels @ 250 acres State of WI & Drumlin Area Land Trust as co-holders: 8 parcels @ 275 acres **estimated total 18 property splits See Reverse for map**
- ◆ **Current money held for purchase:** ~ \$93,000 available estimated to purchase two additional easements and contingent on NRCS funding
- ◆ **Purchased Easement cost estimates:** on average \$65,000 per purchase with \$140,000 NRCS matching grant. This includes appraisal, title insurance and closing costs.

Agenda items #19 & 20 - Agricultural Easements Donated & Purchased



- Easement Grantees**
- JEFFERSON COUNTY, NRCS - 3
 - JEFFERSON COUNTY, DONATED EASEMENT - 5
 - STATE OF WISCONSIN - DATCP/JEFFERS... COUNTY, NRCS - 1
 - STATE OF WISCONSIN - DATCP, DRUMLIN AREA LAND TRUST - 1
 - VARIOUS LAND TRUSTS - 16



For follow-up you may contact:

Gerry Kokkonen
 GIS/Land Use Specialist
 LWCD, RM 113
 920.674.7117

geraldk@jeffersoncountywi.gov

Sources: Esri, HERE, DeLorme, Intermap, increment P Corp., GEBCO, USGS, FAO, NPS, NRCAN, GeoBase, IGN, Kadaster NL, Ordnance Survey, Esri Japan, METI, Esri China (Hong Kong), swisstopo, MapmyIndia, © OpenStreetMap contributors, and the GIS User Community



DATCP REPORT

Bureau of Land and Water Resources

October 2018

Soil and Water Resource Management Grants

- Please remember that any transfer of SWRM grant funds must be completed by December 1, 2018.

Land and Water Conservation Board

- At the October 2nd [meeting](#)¹, Juneau and Green Lake counties will present their LWRM plan revisions and Forest county will review their LWRM plan progress. The final 2019 Joint DATCP and DNR allocation plan will be presented.

Nutrient Management

- Counties from across the state joined the agency and private sector participants for the Quality Assurance Team's review of over 80 nutrient management plans. The results of this year's QAT will be available later this year. Past [annual nutrient management updates](#)² are available on our website.
- Over 200 people attended four nutrient management implementation working group meetings held around the state.

Producer-Led Watershed Protection Grants

- DATCP received 27 grant applications requesting a total of \$869,815 for the 2019 grant year. DATCP will review applications and make funding decisions in October.

Farmland Preservation Program

- Three new AEAs will be designated January 1, 2019:
 - Farming for the Future AEA, Trempealeau County
 - Town of Troy AEA, St. Croix County
 - Three Rivers AEA, Waupaca and Outagamie County
- Farmland Preservation plan map amendments were approved for Richland and Rock counties.
- Farmland Preservation zoning ordinances were approved for the Town of Magnolia, Rock County and Richland County.

Conservation Reserve Enhancement Program (CREP)

- **Request for help:** DATCP is requesting pictures of existing CREP sites in recently flooded counties to help document the ability of the practices to protect soil and water resources during the heavy rains received across much of the State. We are specifically looking for pictures of 1) existing CREP sites of any practice type are or were flooded, 2) examples of runoff captured by CREP sites, and 3) potential CREP sites (such as flooded and damaged crops along streams). When you email the pictures to DATCP please indicate the CREP agreement number associated with each the picture. Email pictures to Brian Loeffelholz at Brian.Loeffelholz@wi.gov.
- DATCP and land conservation departments continue to visit CREP easement sites with expired federal contracts. DATCP is sending letters to alert landowners that a representative from DATCP or the LCD may be out to visit the site in the coming year. The letter includes information on the requirements of the CREP easement along with a map showing the easement location.

¹ <https://datcp.wi.gov/Documents/LWCBOct2018MeetingMaterials.pdf>

² https://datcp.wi.gov/Pages/Programs_Services/NMupdates.aspx

Conservation Engineering

- On October 1, 2018, NRCS will fully implement Ecological Sciences Job Approval Authority (ESJAA). This is an approval systems similar to Engineering Job Approval Authority (EJAA) that is for non-engineered practices. Initially only NRCS staff will have ESJAA. A process for partner planners (Counties and DATCP) to obtain ESJAA is currently being developed. Until this process is complete, an NRCS planner with proper ESJAA will need to sign off on all ecological sciences (ES) practices. This includes practices such as critical area seeding (342), mulch (484), and fence (382) that may be a part of engineering designs. If a non-NRCS employee is the approver on an engineering design that includes ANY ES practice, and is part of an NRCS program (EQIP, CSP, CRP, etc.) contract, the planning and design of the ES practice needs to be checked and approved by an NRCS employee with proper ESJAA. These projects may be co-approved for the engineering and ES practice.
- The NRCS website for the Field Office Technical Guide (FOTG) is being migrated to a new site and format. The web address to the old site will no longer work. In order access the latest conservation practice standards, specifications, etc., use the following link <https://efotg.sc.egov.usda.gov/#/>
- After 24 years as the NRCS State Conservation Engineer, John Ramsden is retiring September 28th. John's efforts to work collaboratively on engineering programs has had a direct and positive impact on state and local conservation programs. His dedication and partnership are greatly appreciated and will be missed!

Livestock Facility Siting

- The Livestock Facility Siting Review Board met in September regarding the case of Ledgeview Farms v. Town of Ledgeview, Brown County. A review board hearing is scheduled for October 24. Issues in this case include whether the town met the requirements for imposing a more stringent setback for manure storage and whether the town can consider the credibility of the applicant in denying a permit application.

Agricultural Impact Statements

- DATCP completed an [Agricultural Impact Statement \(AIS\)](#)³ for an acquisition required by the Kenosha County Airport
- DATCP is working on AISs for two WisDOT projects. One includes the resurfacing of USH 12 in Jefferson County with improvements at intersections. The second is an expansion of CTH KR from CTH H to Old Green Bay Road in Kenosah and Racine Counties.
- DATCP has provided comments to the Public Service Commission (PSC) regarding the proposals for two solar projects, a 300-megawatt project (MW) in Iowa County (Badger Hollow) and a 150-MW project in Manitowoc and Kewaunee Counties (Two Creeks). The PSC has declared both of these applications complete and will begin the review process which includes public comment periods.

Other

- Keith Foye, Director of the Land and Water Resources Bureau, is retiring on October 19. Keith has dedicated 42 years to soil and water resource conservation in Wisconsin. He spent 12 years in Clark County as the county conservationist. In 1988, he took a position at DATCP and has spent the last 30 years working on a variety of soil and water conservation programs, including farmland preservation and CREP. Keith's knowledge and his dedication to conservation in Wisconsin is highly valued by those of us who have had a chance to work with him. Help us wish him well on his future adventures!

Celebration for Keith Foye

Thursday, October 18

**1:00-3:00 p.m. with a presentation at 2:00 p.m.
Cafeteria at 2811 Agriculture Drive, Madison, WI**

³ <https://datcp.wi.gov/Documents/AISKenoshaAirport.pdf>

Tree Order Form	# of	
Type of Tree	Bundles	Subtotal

Subtotal: _____
 5.5% Tax: _____
 Total: _____

Name

Address

City, State, Zip

Phone Number

Checks payable to Jefferson County LWCD

Mail To:
 Jefferson County LWCD
 311 S Center Ave, Rm 113
 Jefferson, WI 53549-1701

Trees are sold in bundles. Payment is due at the time of order. Include this form with payment. All sales are final. No refunds will be given. We are not responsible for viability of trees.

Cut Here

Please Note:

There are a limited number of trees available. Trees will be reserved with paid and completed order forms on the date in which they are received. So place your order soon!

Most species come in bundles of 25. Minimum order of any one species is 25 trees. All orders must be in multiples of 25.

NEW THIS YEAR - Eastern Redbud, Hazelnut, and Sugar Maple trees come in bundles of 10. Minimum order of these trees is 10. All of these trees must be in multiples of 10.

We are required to collect 5.5% sales tax on all trees sold. Please include this in your calculations. **If you are tax exempt, a signed exemption form must be included with the order. Acceptable forms of payment are either cash or check.**

Trees need to be picked up promptly on the pickup date to help ensure viability of trees. Trees not picked up on the pickup date will be donated and refunds will not be given.



Jefferson County Land & Water Conservation Department

2018/2019 Annual Tree Sale



(920) 674-7110

Tree Details

2-3 Fraser Fir - Referred to as the Cadillac of Christmas trees. Has an excellent fragrance and exceptional needle retention. Likes cool, moist, well drained soil. Full to partial sun. Will not do well in heavy, wet clay soil. **12 - 16" \$30 (Per Bundle of 25)**

2-2 White Pine - Grows over 35 ft. Vigorous growing, open tree with long, soft, bluish-green needles. Used in ornamental plantings. Tolerates shade and grows well in sandy and other soils. **7 - 15" \$30 (Per Bundle of 25)**

2-2 Colorado Blue Spruce - Grows over 35 ft. Densely formed tree with stiff silvery-blue to bluish-green needles. An excellent ornamental and background tree. Thrives in dry, well-drained soil. **7 - 15" \$30 (Per Bundle of 25)**

2-2 Norway Spruce - Grows over 35 ft. Fastest growing spruce with dark green needles and draping branches. Good ornamental or windbreak tree. Grows well in most conditions. **7 - 15" \$30 (Per Bundle of 25)**

2-3 Eastern Arborvitae (White Cedar) - Height of 30-40 ft., width 10-15 ft. Fan-like glossy leaves provide year-round color. Forms a wind tight barrier when used for screening or as hedging. Prefers heavy damp areas, but adapts well to other soil types. **12 - 16" \$30 (Per Bundle of 25)**

New This Year

Eastern Redbud - 2 Yr. Seedling - Shrub or small tree, often multi trunked with a wide, umbrella-like crown. Pea-like rose-purple flowers which bloom profusely on bare branches in early spring (March - April) before the foliage emerges. Smooth, heart-shaped, deciduous foliage does not have significant fall color. **12 - 18" \$30 (Per Bundle of 10)**

Hazelnut - 2 Yr. Seedling - Small shrub often in clumps reaching 12 ft. height. Edible brown nuts. Grows best in moist, well-drained soils but will adapt to most types of soils. Full sun or partial shade. Attracts wildlife such as deer, grouse, turkeys, pheasants, and quail. **12 - 18" \$30 (Per Bundle of 10)**

Sugar Maple - 2 Yr. Seedling - Slow to medium growth. Height 100 ft. Outstanding native shade tree. Dark green leaves turn yellow to orange to fiery red in fall. Grows in most soil types. Sap used for maple syrup. Used for ornamental, lumber, and wildlife habitat. **18 - 24" \$30 (Per Bundle of 10)**

Fillable web order form available at:

www.jeffersoncountywi.gov/departments

Select: Land & Water Conservation

Select: Tree Sale

Tree Information

2-2 or 3 refers to the age of the tree. Each tree spends 2 years in a seedling bed and 2 or 3 years in a transplant bed. This pertains to all of the evergreens. The deciduous trees are seedlings and their ages are indicated.

The measurements are approximate. The size of the trees will vary depending on the weather conditions during the growing season.

Please be sure to plant your trees as soon as possible to help viability. If unable to plant right away, keep trees in a cool, dark place such as a garage floor. Keep roots moist but do not submerge.

Tree spades are available for a small refundable deposit fee.

Pick up will be mid to late spring at the Jefferson County Fairgrounds. Postcards will be sent to notify customers of pick up date and time.



Jefferson County Land & Water Conservation Department

October 2018 Director's Report

Reporting/Activity:

- Annual Report presented to County Board.
- 2019 Budget request approved at committee levels.
- Completed staff evaluations.
- Met with LIO to complete LWCD portion of Land Records Plan.
- Completed Executime training.
- Department vehicle put in for repair to the 4 wheel drive system.
- Presented Hoard CUP addendum to Planning & Zoning Committee.
- On-site inspection Hoard's Dairyman waste transfer system.
- On-site inspection Creekwood livestock waste system.
- Attended Minutes Taking workshop.
- NR 151 updates given to committee.
- Attended Nutrient Management Update session sponsored by DATCP.
- Attend Park's Committee meeting to discuss columbarium at the Potter's Field.
- Monthly Deposits (August) - \$ 557.50.

Farmland Preservation Program (FPP):

- Finalized consultant newsletter and released.
- Completed 14 Conservation Plans.
- Issued 4 Certificates of Compliance.
- Issued 0 Notices of Non-Compliance.
- Issued 0 Voluntary Non-participations for FPP.
- Issued 1 Cancellation of Non-Compliance.

Nutrient Management /Cost Share:

- Sent out 10 bid requests for a carryover project needing completion.
- Wrote first draft of Conservation Counts for NMP/Farmer written plans and set up schedule for Update classes.
- Prepared mailing for farmer written plans (42 letters).
- Assist students with sending a file to a crop consultant.
- Completed NMP information to DATCP.

GIS:

- Snowmobile Trails Data Update.
- Non-Metallic Mine Inspections.
- Drone Operational License Officially acquired.
- Flood Mitigation Property Mapping.
- NMP Data - NR 151 Database Updates.
- Landowner Easement Letter.

Livestock Siting Application Reviews & Permits:

- Met with one producer looking to complete Siting application.

Animal Waste - Manure Discharge/Complaints:

- Manure investigation in Palmyra. Smith Farm. This remains on-going.

Tree Program:

- 2018-2019 Tree order forms sent to 300 previous participants.
- Tree Sales database fully updated and new orders being entered.

Miscellaneous:

- Monthly staff meeting completed.
- Reviewed and approved monthly P-Card Purchases in MUNIS.
- Reconciled September financials in MUNIS.
- Day to day office activities.
- Began scheduling final quarter of 2018 leave requests.

Lakes & Streams:

- Answered questions from citizens regarding lake levels, recreational rules, and erosion control.

Lower Spring Lake

- Talked to district president and DNR about water level drawdowns to manage Eurasian water milfoil.
- Entered the 2018 aquatic plant survey data into a spreadsheet.

Rock Lake

- Attended the Joint Rock Lake Committee meeting to talk about edits to the pier ordinance.
- Made edits to the pier ordinance document.
- Met with the DNR and the state-wide team for the Healthy Lakes Program to show them the 3 practices installed on Rock Lake: rain garden, shoreland garden, and fish sticks.

Rock River Coalition

- Attended the monthly RRC Board meeting (via phone).

Stream Sampling Program with volunteers

- Attended a meeting with stream monitoring coordinators from other counties and the Rock River Coalition to plan for a conference in November.
- Took part in a conference call with the DNR and the Rock River Coalition regarding stream sampling data, impaired waters, and data visualization.

09/21/2018
10:21:02

Jefferson County
FLEXIBLE PERIOD REPORT

PAGE 1
giflrxprt

FROM 2018 01 TO 2018 08

ACCOUNTS FOR:	ORIGINAL	TRANFRS/	REVISED	ACTUALS	ENCUMBRANCES	AVAILABLE	PCT
100 General Fund	APPROP	ADJSTMTS	BUDGET			BUDGET	USED
<hr/>							
12401 Land Conservation							
12401 411100 General Property Taxes	-364,433	0	-364,433	-242,955.36	.00	-121,477.64	66.7%
12401 421001 State Aid	-183,500	0	-183,500	-173,606.00	.00	-9,894.00	94.6%
12401 432099 Other Permits	-250	0	-250	.00	.00	-250.00	.0%
12401 451010 Sale Of Maps & Plat Books	-250	0	-250	-52.30	.00	-197.70	20.9%
12401 451020 Other Fees	0	0	0	-72.90	.00	72.90	.0%
12401 451421 Crep Cancellation Fee	-250	0	-250	.00	.00	-250.00	.0%
12401 458001 Tree Sales	-10,000	0	-10,000	-3,601.80	.00	-6,398.20	36.0%
12401 458005 Ag & Hortiic Supply Revenue	-250	0	-250	.00	.00	-250.00	.0%
12401 458009 Livestock Siting App Review F	-2,500	0	-2,500	-900.00	.00	-1,600.00	36.0%
12401 458013 Farmland Cert Fee	-22,500	0	-22,500	-17,265.00	.00	-5,235.00	76.7%
12401 511110 Salary-Permanent Regular	95,918	0	95,918	47,479.23	.00	48,438.77	49.5%
12401 511210 Wages-Regular	299,787	0	299,787	170,199.15	.00	129,587.85	56.8%
12401 511310 Wages-Sick Leave	0	0	0	8,245.05	.00	-8,245.05	.0%
12401 511320 Wages-Vacation Pay	0	0	0	17,810.64	.00	-17,810.64	.0%
12401 511330 Wages-Longevity Pay	1,189	0	1,189	.00	.00	1,189.00	.0%
12401 511340 Wages-Holiday Pay	0	0	0	7,003.25	.00	-7,003.25	.0%
12401 511350 Wages-Miscellaneous(Comp)	0	0	0	543.71	.00	-543.71	.0%
12401 511380 Wages-Bereavement	0	0	0	779.04	.00	-779.04	.0%
12401 512141 Social Security	30,020	0	30,020	18,804.70	.00	11,215.30	62.6%
12401 512142 Retirement (Employer)	26,592	0	26,592	16,889.16	.00	9,702.84	63.5%
12401 512144 Health Insurance	77,333	0	77,333	45,811.02	.00	31,521.98	59.2%
12401 512145 Life Insurance	130	0	130	76.31	.00	53.69	58.7%
12401 512150 FSA Contribution	1,250	0	1,250	1,125.00	.00	125.00	90.0%
12401 512173 Dental Insurance	5,904	0	5,904	3,330.01	.00	2,573.99	56.4%
12401 531003 Notary Public Related	80	0	80	.00	.00	80.00	.0%
12401 531298 United Parcel Service	50	0	50	.00	.00	50.00	.0%
12401 531301 Office Equipment	750	0	750	.00	.00	750.00	.0%
12401 531303 Computer Equipmt & Software	1,000	0	1,000	.00	.00	1,000.00	.0%
12401 531311 Postage & Box Rent	1,550	0	1,550	576.25	.00	973.75	37.2%
12401 531312 Office Supplies	1,200	0	1,200	291.42	.00	908.58	24.3%
12401 531313 Printing & Duplicating	750	0	750	167.47	.00	582.53	22.3%
12401 531314 Small Items Of Equipment	1,750	0	1,750	63.62	.00	1,686.38	3.6%
12401 531321 Publication Of Legal Notice	100	0	100	.00	.00	100.00	.0%
12401 531324 Membership Dues	2,000	0	2,000	1,796.00	.00	204.00	89.8%
12401 531341 Agricultural & Hortiic Suppli	6,000	0	6,000	4,548.88	.00	1,451.12	75.8%
12401 531348 Educational Supplies	200	0	200	.00	.00	200.00	.0%
12401 531351 Gas/Diesel	1,500	0	1,500	697.99	.00	802.01	46.5%
12401 532325 Registration	1,000	0	1,000	530.00	.00	470.00	53.0%

09/21/2018
10:21:02

Jefferson County
FLEXIBLE PERIOD REPORT

FROM 2018 01 TO 2018 08

ACCOUNTS FOR: 100 General Fund	ORIGINAL APPROP	TRANFRS/ ADJSTMTS	REVISED BUDGET	ACTUALS	ENCUMBRANCES	AVAILABLE BUDGET	PCT USED
12401 532332 Mileage	200	0	200	.00	.00	200.00	.0%
12401 532335 Meals	200	0	200	36.67	.00	163.33	18.3%
12401 532336 Lodging	600	0	600	538.08	.00	61.92	89.7%
12401 533225 Telephone & Fax	500	0	500	73.49	.00	426.51	14.7%
12401 533236 Wireless Internet	1,850	0	1,850	1,396.26	.00	453.74	75.5%
12401 535242 Maintain Machinery & Equip	1,200	0	1,200	292.02	.00	907.98	24.3%
12401 535259 Tree Planter Service	100	0	100	.00	.00	100.00	.0%
12401 571004 IP Telephony Allocation	760	0	760	506.64	.00	253.36	66.7%
12401 571005 Duplicating Allocation	144	0	144	96.00	.00	48.00	66.7%
12401 571009 MIS PC Group Allocation	14,968	0	14,968	9,978.64	.00	4,989.36	66.7%
12401 571010 MIS Systems Grp Alloc(ISIS)	4,969	0	4,969	3,312.64	.00	1,656.36	66.7%
12401 591519 Other Insurance	2,389	0	2,389	1,592.64	.00	796.36	66.7%
<hr/> 12402 Wildlife Crop Damage							
12402 421001 State Aid	-20,000	0	-20,000	-6,998.11	.00	-13,001.89	35.0%
12402 529299 Purchase Care & Services	20,000	0	20,000	6,998.11	.00	13,001.89	35.0%
<hr/> 12403 Nutrient Management							
12403 458012 Public Land Consv Fees	-250	0	-250	-70.00	.00	-180.00	28.0%
12403 535349 Other Supplies	250	0	250	43.89	.00	206.11	17.6%
<hr/> 12404 Grants and Programs							
12404 421001 State Aid	-3,300	0	-3,300	.00	.00	-3,300.00	.0%
12404 521219 Other Professional Serv	3,000	0	3,000	.00	.00	3,000.00	.0%
12404 529299 Purchase Care & Services	300	0	300	.00	.00	300.00	.0%
<hr/> 12405 Land & Water Resource Plan							
12405 421003 State Aid GPR	-14,000	0	-14,000	-770.00	.00	-13,230.00	5.5%
12405 421004 State Aid Bonded	-35,000	0	-35,000	-17,571.03	.00	-17,428.97	50.2%
12405 593701 Cost Share Payment	49,000	0	49,000	26,557.50	.00	22,442.50	54.2%
<hr/> 12406 Non-Metallic Mining							
12406 411100 General Property Taxes	10,995	0	10,995	7,330.00	.00	3,665.00	66.7%

09/21/2018
10:21:02

Jefferson County
FLEXIBLE PERIOD REPORT

FROM 2018 01 TO 2018 08

ACCOUNTS FOR:	ORIGINAL APPROP	TRANFRS/ ADJSTMTS	REVISED BUDGET	ACTUALS	ENCUMBRANCES	AVAILABLE BUDGET	PCT USED
100 General Fund							
12406 432005 Non-Metallic Annual Fee	-9,445	0	-9,445	.00	.00	-9,445.00	.0%
12406 474175 Highway Billed	-2,035	0	-2,035	.00	.00	-2,035.00	.0%
12406 531311 Postage & Box Rent	60	0	60	25.63	.00	34.37	42.7%
12406 531312 Office Supplies	50	0	50	.00	.00	50.00	.0%
12406 531348 Educational Supplies	25	0	25	24.00	.00	1.00	96.0%
12406 532325 Registration	150	0	150	35.00	.00	115.00	23.3%
12406 532332 Mileage	50	0	50	.00	.00	50.00	.0%
12406 532335 Meals	50	0	50	.00	.00	50.00	.0%
12406 532336 Lodging	100	0	100	.00	.00	100.00	.0%
<hr/>							
12407 Farmland Preservation							
12407 481001 Interest & Dividends	0	0	0	-1,674.19	.00	1,674.19	.0%
12407 531311 Postage & Box Rent	0	0	0	14.33	.00	-14.33	.0%
12407 531312 Office Supplies	0	0	0	125.00	.00	-125.00	.0%
12407 531313 Printing & Duplicating	0	0	0	11.00	.00	-11.00	.0%
12407 571005 Duplicating Allocation	76	0	76	50.64	.00	25.36	66.6%
12407 594950 Operating Reserve	0	32,253	32,253	.00	.00	32,253.20	.0%
12407 594960 Capital Reserve	92,805	0	92,805	.00	.00	92,805.00	.0%
12407 699800 Resv Applied Capital	-92,881	-32,253	-125,134	.00	.00	-125,134.20	.0%
<hr/>							
12408 County Farm							
12408 411100 General Property Taxes	103,688	0	103,688	69,125.36	.00	34,562.64	66.7%
12408 482003 County Farm Land Rent	-105,688	0	-105,688	-40,170.60	.00	-65,517.40	38.0%
12408 529170 Grounds Keeping Charges	1,000	0	1,000	721.41	.00	278.59	72.1%
12408 535249 Sundry Repair	1,000	0	1,000	.00	.00	1,000.00	.0%

09/21/2018
10:21:02

Jefferson County
FLEXIBLE PERIOD REPORT

FROM 2018 01 TO 2018 08

	ORIGINAL APPROP	TRANFRS/ ADJSTMTS	REVISED BUDGET	ACTUALS	ENCUMBRANCES	AVAILABLE BUDGET	PCT USED
GRAND TOTAL	0	0	0	-30,054.44	.00	30,054.44	.0%

REPORT OPTIONS

	Field #	Total	Page Break	
Sequence 1	1	N	Y	From Yr/Per: 2018/ 1
Sequence 2	9	N	N	To Yr/Per: 2018/ 8
Sequence 3	0	N	N	Budget Year: 2018
Sequence 4	0	N	N	Print totals only: N

Report title: FLEXIBLE PERIOD REPORT

Includes accounts exceeding 0% of budget.

Print Full or Short description: F

Print full GL account: N

Sort by full GL account: N

Print Revenues-Version headings: N

Print revenue as credit: Y

Print revenue budgets as zero: N

Format type: 1

Double space: N

Suppress zero bal accts: Y

Amounts/totals exceed 999 million dollars: N

Roll projects to object: N

Print journal detail: N

From Yr/Per: 2018/ 1

To Yr/Per: 2018/ 8

Include budget entries: Y

Incl encumb/liq entries: Y

Sort by JE # or PO #: J

Detail format option: 1

Multiyear view: D